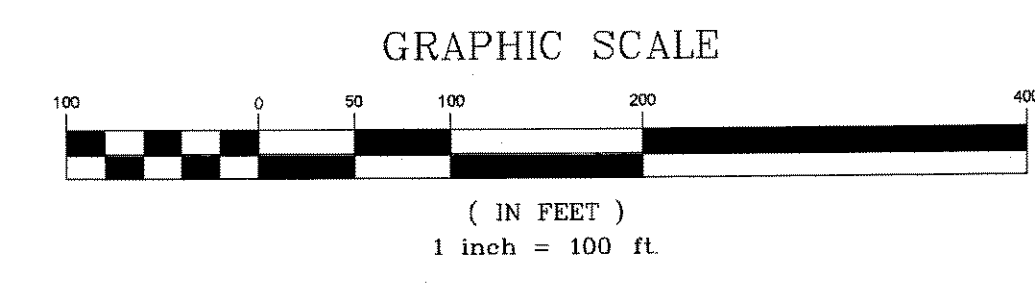
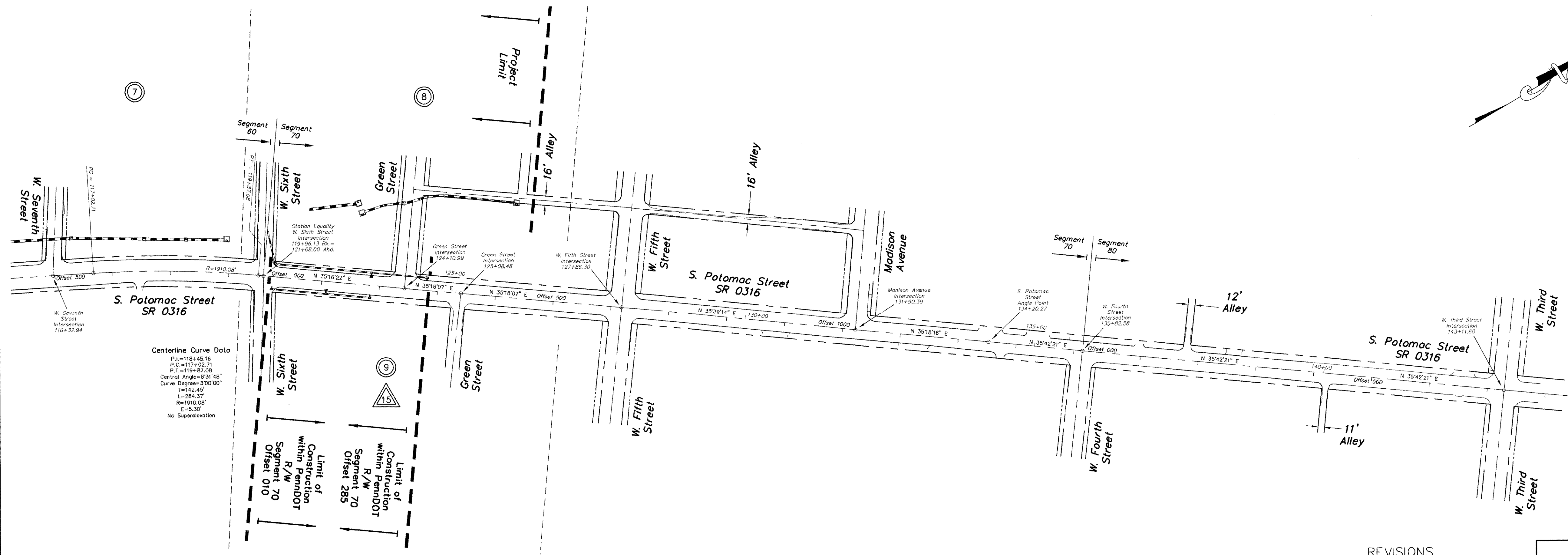
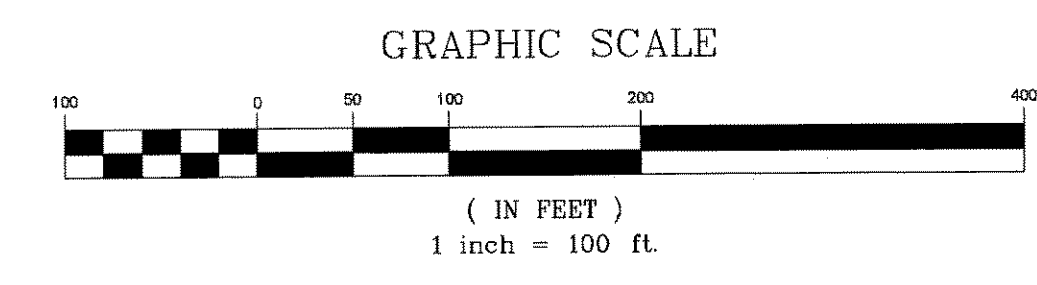
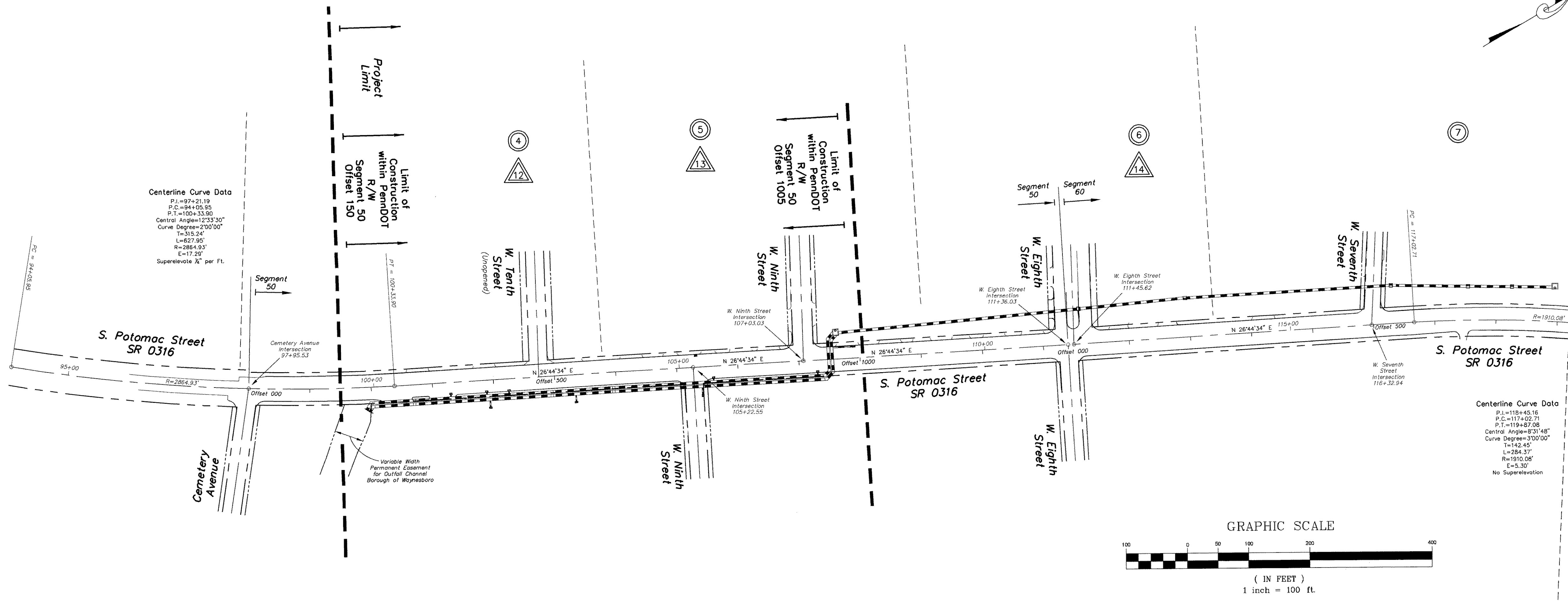


State Highway Right-of-Way Notes:

The legal right-of-way of S.R. 0316 (South Potomac Street) from Station 97+91± to 119+96.13 is 53 feet in width based on a plan of Legislative Route No. 888, Section No. 2, signed by the Mayor of the Borough of Waynesboro along with the Secretary and President of the Borough of Waynesboro Town Council on March 29, 1965 and signed by the Governor on April 14, 1965.

The legal right-of-way of S.R. 0316 (South Potomac Street) from Station 121+68.00 to 156+95.50 is 53 feet in width as ordained by the Borough of Waynesboro Town Council by Ordinance No. 68 dated September 2, 1890.



- (4) = Storm Sewer Plan and Profile Sheet
- (14) = Roadway Restoration Plan Sheet

H.O.P. Application No. 14403  
 Bid Alternate 2B - Secondary By-Pass Route  
 Project Overview

**SOUTH POTOMAC STREET BY-PASS**  
 STORM SEWER IMPROVEMENT PROJECT  
 FOR  
**THE BOROUGH OF WAYNESBORO**  
 LOCATED IN  
 WAYNESBORO BOROUGH, FRANKLIN COUNTY, PA.

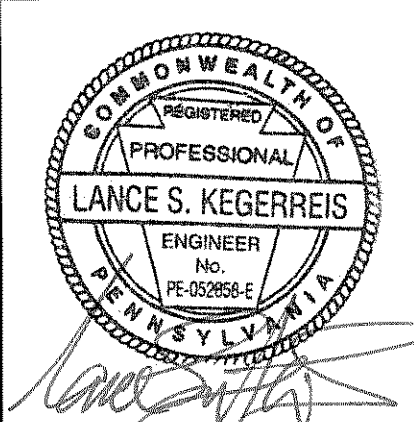
**DENNIS E. BLACK ENGINEERING, INCORPORATED**  
 ENGINEERING—SURVEYING—PLANNING  
 2400 PHILADELPHIA AVENUE 222 NORTH SECOND STREET  
 CHAMBERSBURG, PA 17201 McCONNELLSBURG, PA 17233  
 (717)263-8794 (888)238-0661 (717)485-4028

DWN_GDW	CLIENT No. 1357	ORDER No. 090105.00	SHEET 2 of 20
CHK_GDW	DATE 6/21/2012	AutoCAD DRAWING REF. NUMBER	DRAWING No. 12-67
APP_GDW	SCALE 1"=100'	AutoCad#	

THE ORIGINAL DRAWING AND THE INFORMATION SHOWN THEREON ARE THE PROPERTY OF D. E. BLACK ENG., INC. AND SHALL NOT BE DUPLICATED WITHOUT WRITTEN PERMISSION

REVISIONS

NO.	DATE	DESCRIPTION	BY
1			



FILE: N:\Land Projects\2012\090105\_3\dwg\Sheet Files\090105-Project Overview Plan.dwg LAYOUT: Project Overview (2) BY: Glenn Watson ON: 7/19/2012 2:46 PM